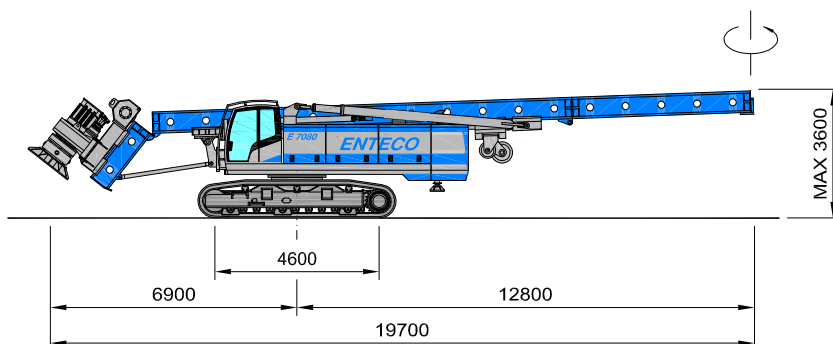
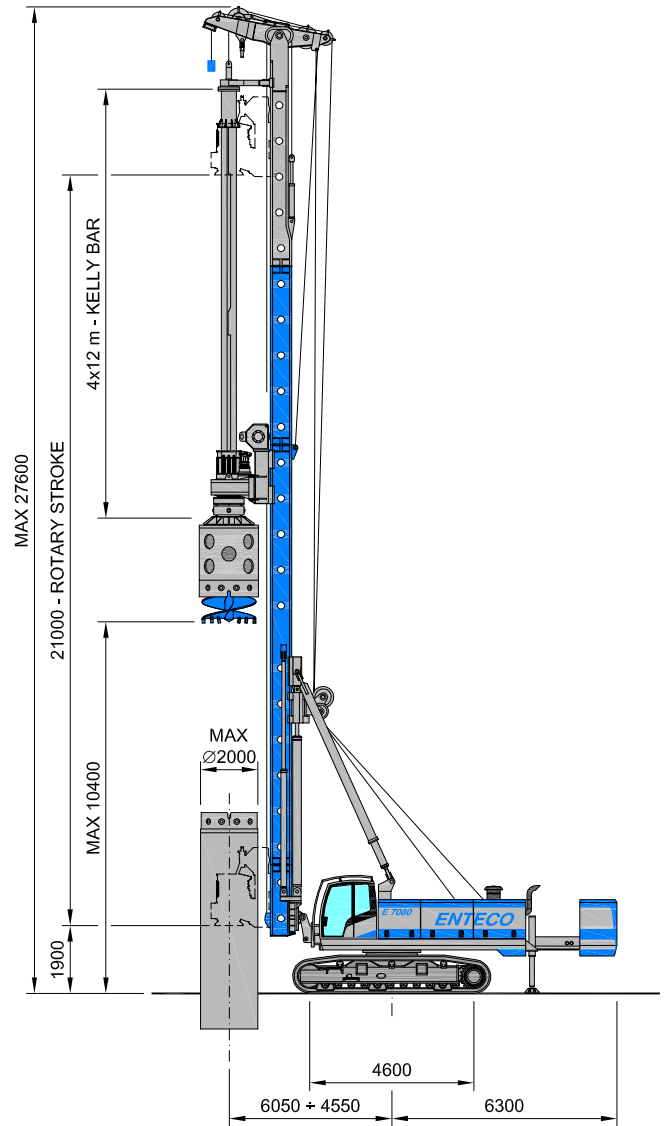
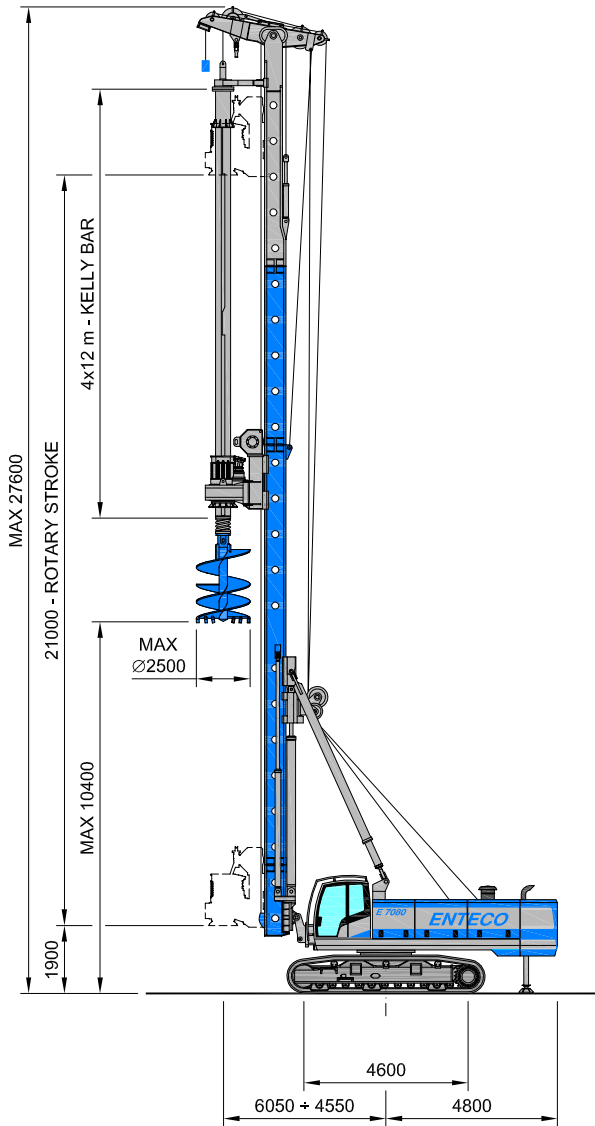


E 7080

R300

BORED PILES KIT

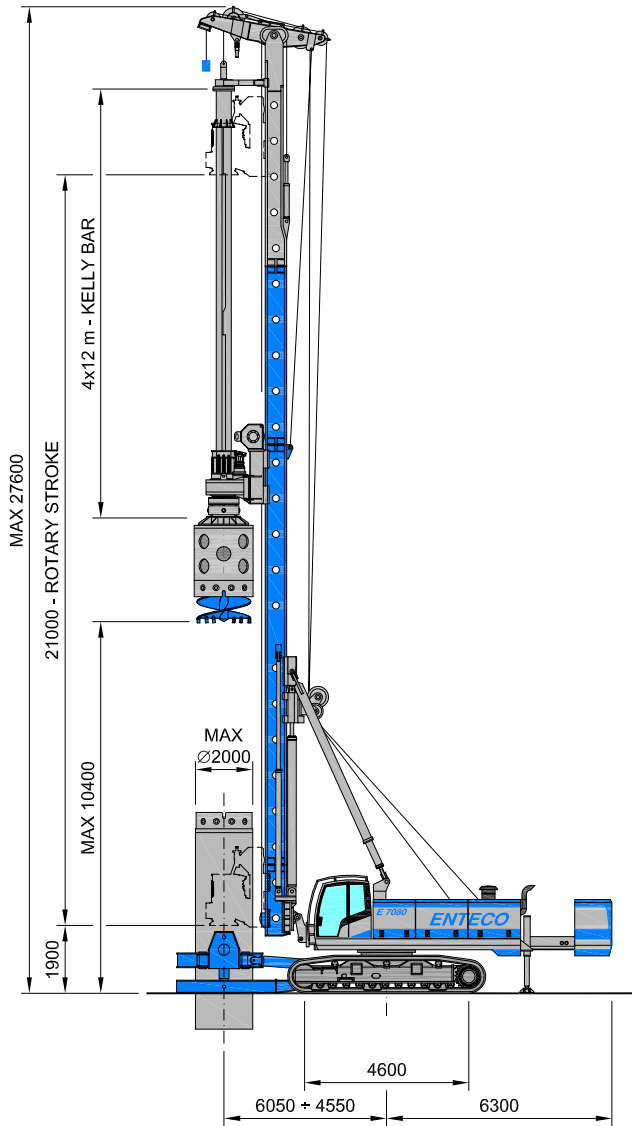


E 7080

R300

BORED PILES KIT

E7080 - R300 with casing oscillator



CASING OSCILLATOR

	OCB 1500	OCB 2000
Casing max diameter	mm 1500	2000
Lifting force	kN 2010	3140
Clamping force	kN 1450	2210
Torque	kNm 2200	4580
Weight	kg 10500	18500

E 7080 - R300 BORED PILES KIT

OPERATING WEIGHT	ton	up to 94
Drilling diameter	mm	500+2500
Max drilling depth	m	90

MAST

Mast vertical travel	mm	3000
Front/Rear inclination		+5°/-15°
Side inclination		±5°

CROWD SYSTEM

	WINCH	CYLINDER
Rotary stroke	mm 21000	6000
Crowd force	kN 300	300
Extraction force	kN 300	240

ROTARY

Model		ENTECO RH51/2
Max torque	kNm	300
Max drilling speed	rpm	33
Spin-off speed	rpm	160

INTERLOCKING KELLY-BAR

Type - elements/length	4x9 m	4x12 m	4x15 m	4x19 m
Max depth	m 32	44	56	72
Weight	kg 5800	7400	9000	11500

FRICTION KELLY-BAR

Type - elements/length	5x9 m	5x12 m	5x15 m	5x19 m
Max depth	m 40	55	70	90
Weight	kg 6700	8500	10500	13200

E 7080 - BASE MACHINE

CRAWLERS

Overall width	mm	3000+4500
Track pads	mm	900
Tramming speed	km/h	1.8

DIESEL ENGINE

Model	CATERPILLAR	C13 ACERT	C15 ACERT
Rated power	HP/kW	440/328	540/403
Fuel tank capacity	litres		750

MAIN WINCH

Max line-pull 1st layer	kN	270
Free-fall device		option

AUXILIARY WINCH

Max line-pull 1st layer	kN	150
Free-fall device		option



Via dell'Artigianato, 33 - Z.I. - 30020 Fossalta di Piave - VENEZIA - ITALIA
 Tel +39 0421 67.99.77 - Fax +39 0421 67.99.93 - e-mail: info@entecodrill.com - www.entecodrill.com

E7080 - R300 108Q-033 20120228