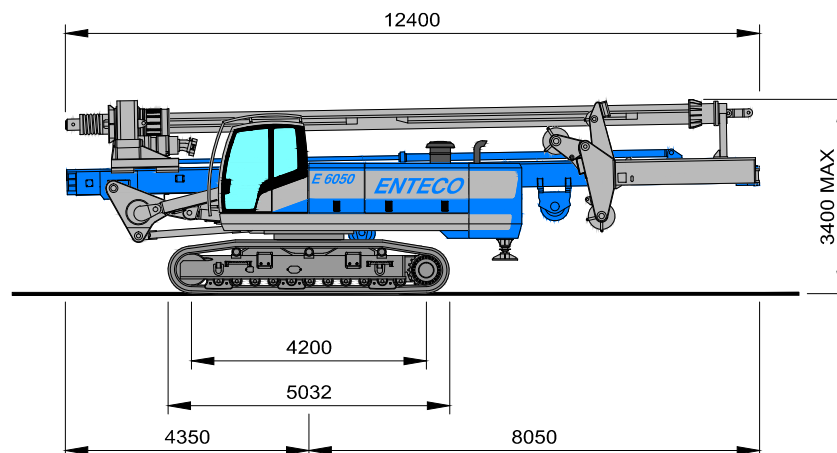
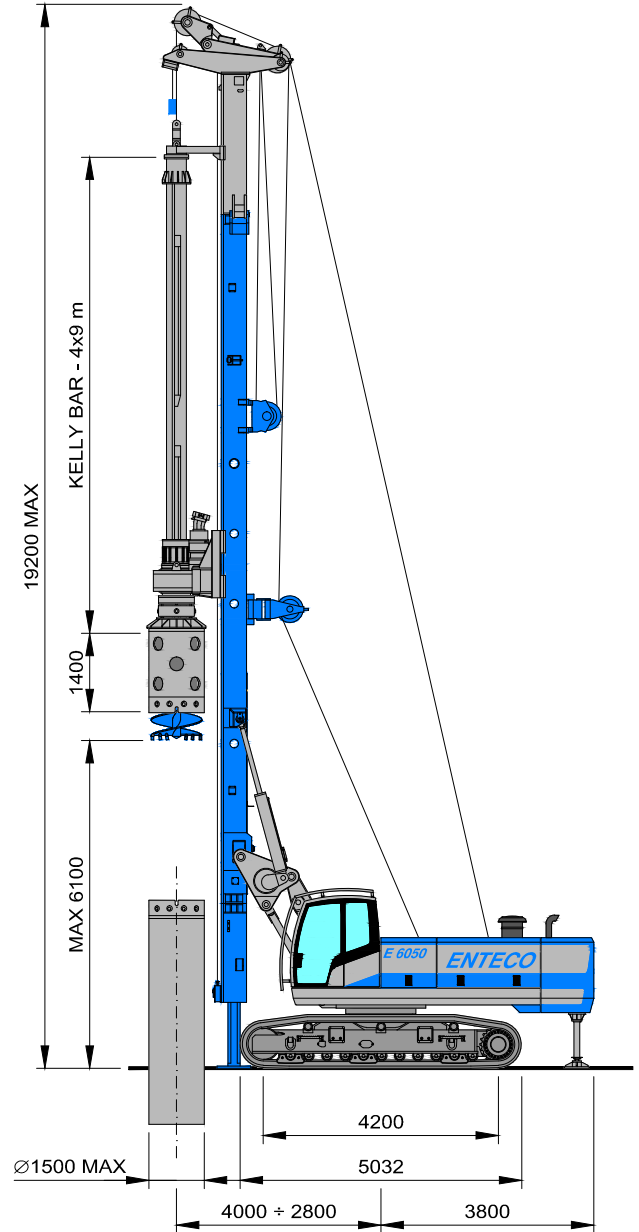
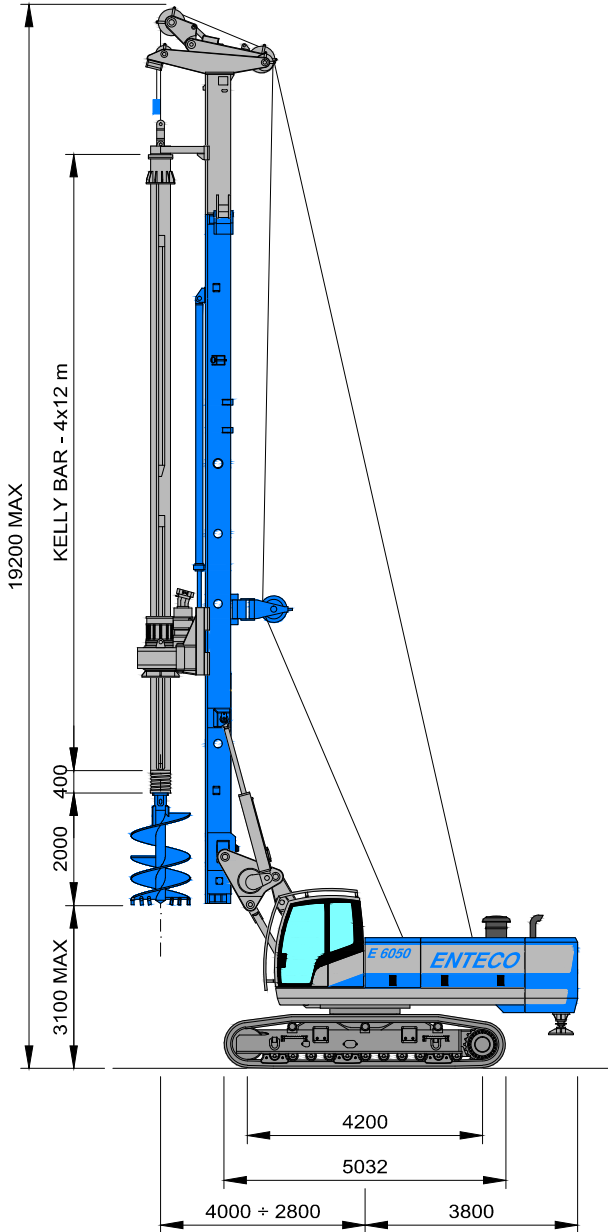


# E 6050

R240

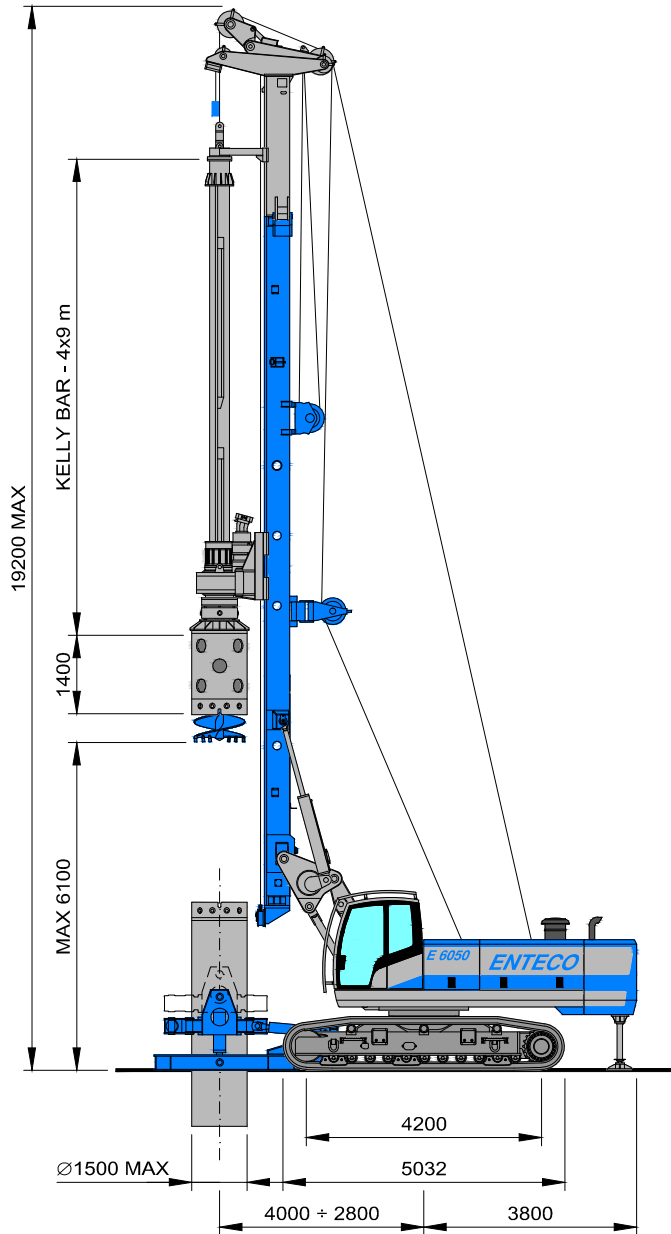
BORED PILES KIT



# E 6050

## R240

### BORED PILES KIT



CASING OSCILLATOR	OCB 1000	OCB 1200	OCB 1500	
Casing max diameter	mm	1000	1200	1500
Lifting force	kN	1400	1680	2010
Clamping force	kN	950	1300	1450
Torque	kNm	1200	1600	2200
Weight	kg	7500	9000	11500

#### E 6050 - R240 BORED PILES KIT

OPERATING WEIGHT	ton	up to 56
Drilling diameter Auger in front of the mast	mm	1500
Drilling diameter with carriage spacer Auger in front of the mast	mm	1800
Drilling diameter Auger beneath the mast	mm	2000
Max drilling depth	m	54

#### MAST

Front/Rear inclination	+4°/-15°
Side inclination	±4°

#### CROWD SYSTEM

	WINCH	CYLINDER	
Rotary stroke	mm	14500	4500
Crowd force	kN	200	150
Extraction force	kN	200	200

#### ROTARY

Model	ENTECO RH41/2	
Max torque	kNm	245
Max drilling speed	rpm	39+60
Spin-off speed	rpm	160

#### INTERLOCKING KELLY-BAR

Type - elements/length	3x9 m	3x12 m	4x9 m	4x12 m	
Max depth	m	24	33	32	44
Weight	kg	3800	5000	4300	5600

#### FRICITION KELLY-BAR

Type - elements/length	5x9 m	5x12 m	
Max depth	m	40	54
Weight	kg	4200	5300

#### E 6050 - BASE MACHINE

#### CRAWLERS

	STANDARD	OPTION	
Overall width	mm	3000+4200	2550+3950
Track pads	mm	700	650
Tramming speed	km/h	2.1	2.1

#### DIESEL ENGINE

Model	CATERPILLAR	C9 ACERT
Rated power	HP/kW	350/261
Fuel tank capacity	litres	400

#### MAIN WINCH

Max line-pull 1st layer	kN	165
Free-fall device		option

#### AUXILIARY WINCH

	STANDARD	OPTION	
Max line-pull 1st layer	kN	50	70
Free-fall device		option	option



Via dell'Artigianato, 33 - Z.I. - 30020 Fossalta di Piave - VENEZIA - ITALIA  
Tel +39 0421 67.99.77 - Fax +39 0421 67.99.93 - e-mail: info@entecodrill.com - www.entecodrill.com

E6050 - R240 090Q-203 20120223