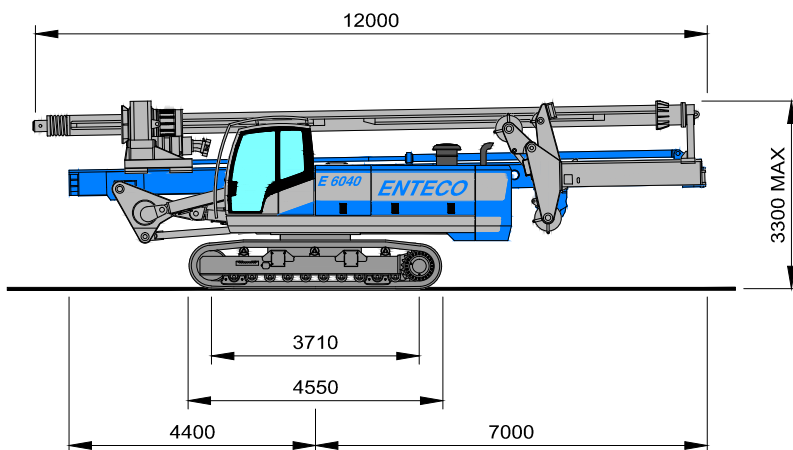
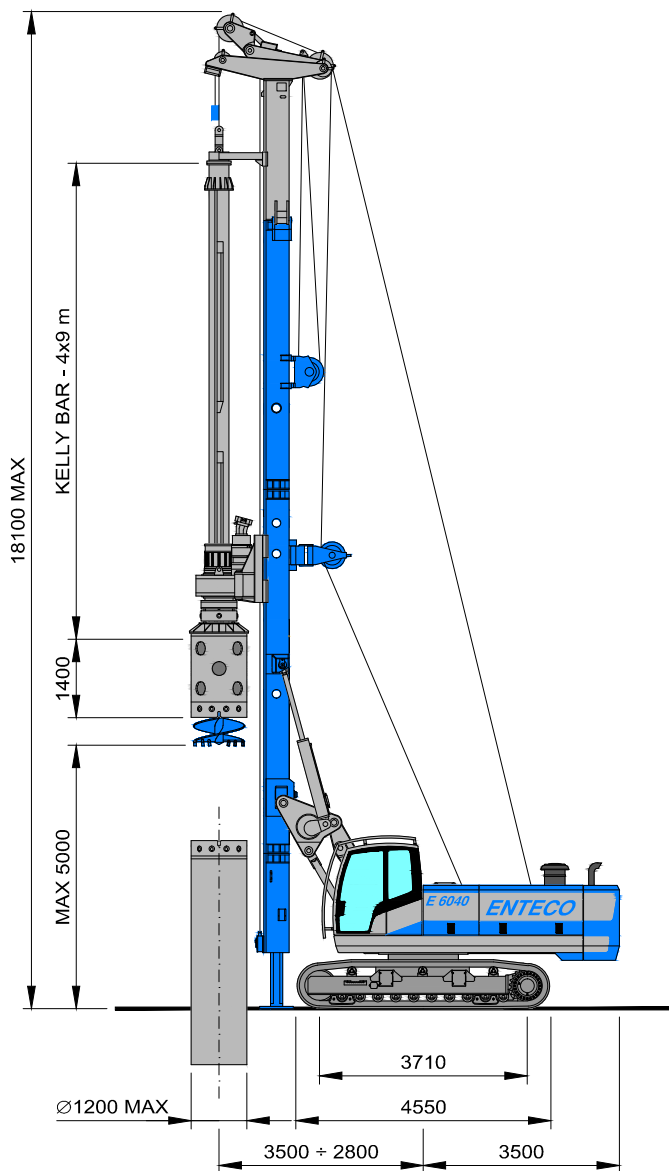
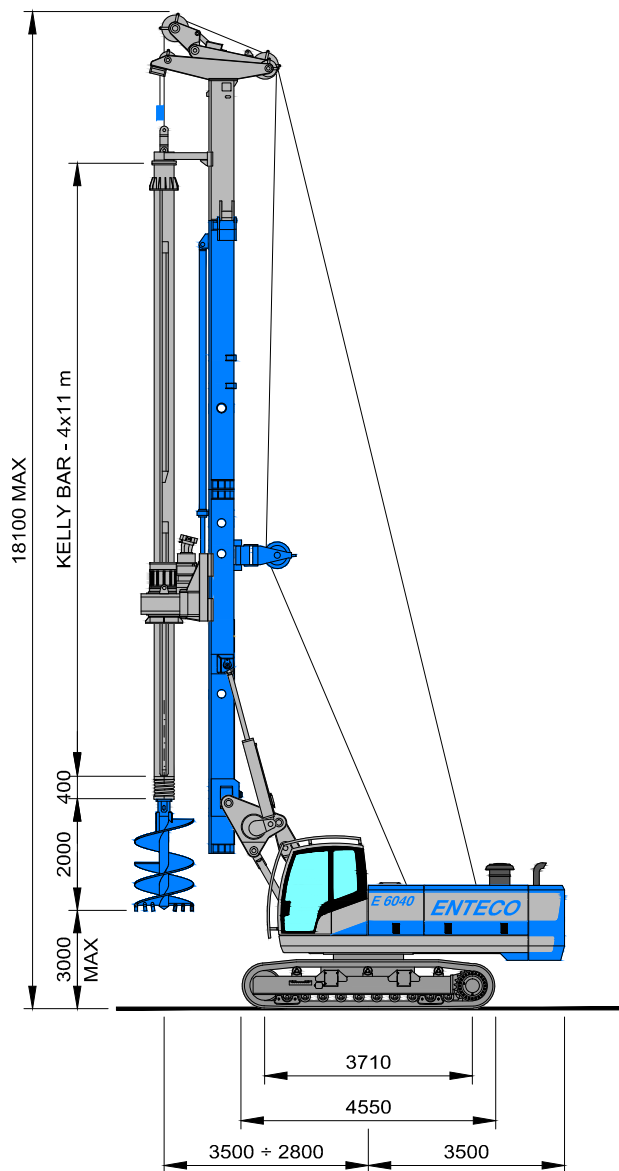


E 6040

R150

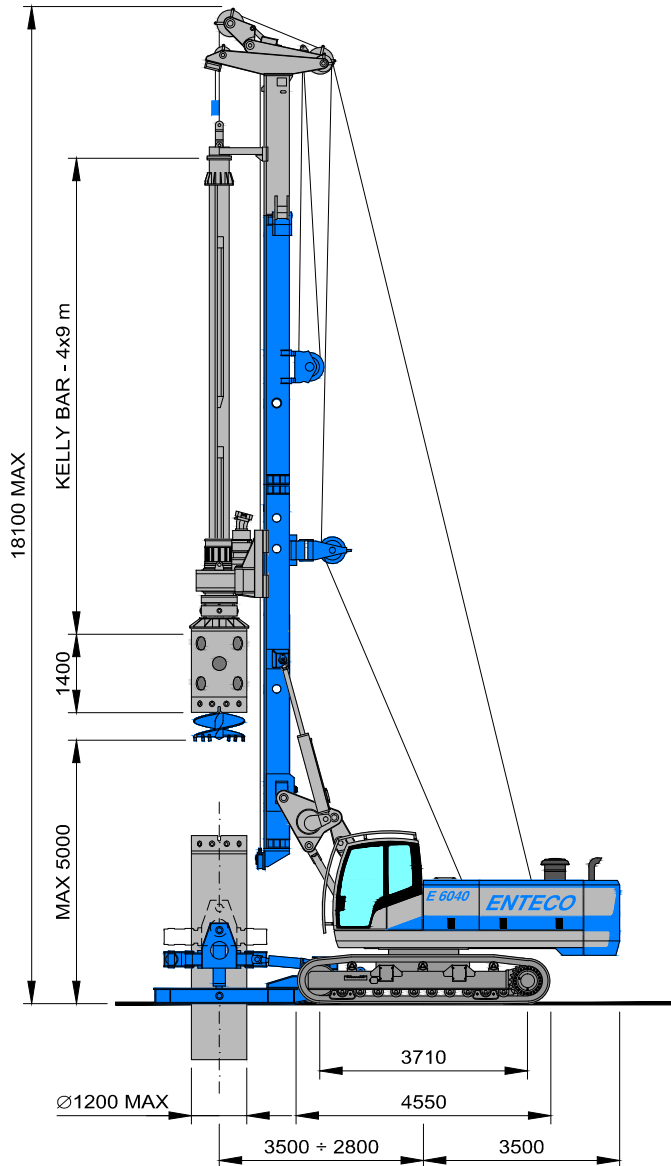
BORED PILES KIT



E 6040

R150

B O R E D P I L E S K I T



CASING OSCILLATOR		OCB 1000	OCB 1200
Casing max diameter	mm	1000	1200
Lifting force	kN	1400	1680
Clamping force	kN	950	1300
Torque	kNm	1200	1600
Weight	kg	7500	9000

E 6040 - R150 BORED PILES KIT

OPERATING WEIGHT	ton	up to 42
Drilling diameter Auger in front of the mast	mm	1500
Drilling diameter Auger beneath the mast	mm	2000
Max drilling depth	m	50

MAST

Front/Rear inclination	+4°/-15°
Side inclination	±4°

CROWD SYSTEM

	WINCH	CYLINDER
Rotary stroke	mm	13500 3800
Crowd force	kN	150 140
Extraction force	kN	150 150

ROTARY

Model	ENTEKO RH41
Max torque	kNm 150
Max drilling speed	rpm 31+64
Spin-off speed	rpm 170

INTERLOCKING KELLY-BAR

Type - elements/length	3x9 m	3x11 m	4x9 m	4x11 m
Max depth	m 24	30	32	40
Weight	kg 3800	4700	4300	5600

FRICITION KELLY-BAR

Type - elements/length	5x9 m	5x11 m
Max depth	m 40	50
Weight	kg 4200	5000

E 6040 - BASE MACHINE

CRAWLERS

Overall width	mm	2500+3700
Track pads	mm	600
Crawler drive speed	km/h	2.1

DIESEL ENGINE

Model	CATERPILLAR	C7 ACERT
Rated power	HP/kW	250/187
Fuel tank capacity	litres	350

MAIN WINCH

Max line-pull 1st layer	kN	150
Free-fall device		option

AUXILIARY WINCH

Max line-pull 1st layer	kN	50
Free-fall device		option



Via dell'Artigianato, 33 - Z.I. - 30020 Fossalta di Piave - VENEZIA - ITALIA
Tel +39 0421 67.99.77 - Fax +39 0421 67.99.93 - e-mail: info@entecodrill.com - www.entecodrill.com

E6040 - R150 089Q-353 20120223